



Stock Catalog & Price List

TABLE OF CONTENTS

Sidewall Mounted Grilles & Registers	3
Square Cone Diffusers	4
Louver Faced Ceiling Diffusers	5
Round Ceiling Diffusers	6
Lay-In Slot Diffusers	6
Curved Blade Ceiling Diffusers	7
Filter Back Returns	8
Perforated Supply & Return Grilles	9
Perforated Diffusers	9
Egg Crate / Door Grilles	10
Spiral Duct Mounted Grilles	10
Air Distribution Accessories	11
Fire Dampers	12
Ceiling Radiation Dampers	13
Access Doors	14
Access Panels	15
Flexible Duct Systems	16
Flexible Duct Accessories	17
Roof Exhaust Direct Drive	18 -19
Roof Exhaust Belt Drive	20 - 22
Upblast Roof Exhaust Belt Drive	23 - 24
Fan Accessories	25
Ceiling Exhaust Fans	26 - 27
Inline Cabinet Exhaust	28 - 29
Discharge Accessories	30 - 31
Gravity Ventilators	32
Roof Curbs	33
Spiral Ductwork	34 - 35
Filters	36
Vibration Isolation	37 - 38
VAV Diffusers	39
Air Terminals	39
Sheetmetal Ducts, Elbows & Fittings	40 - 41
Sheetmetal Accessories	42 - 43
B-Vent Flue Pipe	44
Gauges & Thermometers	45
Introduction to Fan Selection	46
Line Card	47

Terms and Conditions

PRICES

All prices listed are F.O.B. our warehouse plus applicable taxes. Prices are subject to change without notice.

TERMS

All orders shall be cash, certified check or credit card unless prior credit terms have been approved.

PAYMENT

All invoices are net thirty days from date of invoice. Also, all reasonable legal and collection fees shall be assessed in the event it becomes necessary to collect indebtedness.

DELIVERY

Requested shipped items will be sent by our choice via UPS or designated carrier on a prepaid and add basis.

All goods become customer's property when either the freight carrier or customer signs for them at the shipping dock.

Customer is responsible for checking all shipments for shortages and/or visible damage and advising the carrier of any discrepancies on the delivery receipt.

WARRANTY

Mechanical Reps Inc. makes no expressed warranties as to the goods sold, but extends to the buyer the manufacturer's standard warranty which is available on request.

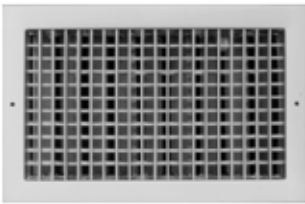
DAMAGES

Mechanical Reps Inc. shall not be liable for any direct, incidental, or consequential damages or losses of any kind resulting from the purchase or installation of any merchandise.

RETURNS

Merchandise may not be returned without written authorization of Mechanical Reps Inc.. All goods must be in resaleable condition and be provided with a copy of the original invoice and within thirty days of delivery.

A 25% restocking/handling fee will be assessed upon all returned merchandise.



MODEL 620D

- Supply Register
- Double Deflection
- Aluminum Construction
- Opposed Blade Damper
- White Finish

Size	List Price	Size	List Price
8 x 4	\$28	18 x 8	\$60
10 x 4	\$35	20 x 8	\$62
12 x 4	\$39	24 x 8	\$73
14 x 4	\$41	30 x 8	\$86
24 x 4	\$55	36 x 8	\$105
6 x 6	\$32	10 x 10	\$46
8 x 6	\$35	12 x 10	\$51
10 x 6	\$38	18 x 10	\$65
12 x 6	\$42	20 x 10	\$64
14 x 6	\$48	24 x 10	\$75
16 x 6	\$50	30 x 10	\$95
18 x 6	\$50	36 x 10	\$121
20 x 6	\$55	12 x 12	\$55
24 x 6	\$59	18 x 12	\$72
30 x 6	\$82	20 x 12	\$76
36 x 6	\$90	24 x 12	\$85
8 x 8	\$39	30 x 12	\$114
10 x 8	\$41	36 x 12	\$132
12 x 8	\$47		
14 x 8	\$50		
16 x 8	\$54		



MODEL 630

- Return Grille
- Fixed Horizontal Bars (45 degree angle)
- Aluminum Construction
- White Finish

Size	List Price	Size	List Price
6 x 6	\$21	12 x 12	\$29
8 x 6	\$21	16 x 12	\$34
10 x 6	\$24	18 x 12	\$36
12 x 6	\$26	24 x 12	\$43
14 x 6	\$26	30 x 12	\$55
16 x 6	\$28	36 x 12	\$62
18 x 6	\$25	14 x 14	\$33
8 x 8	\$24	16 x 16	\$41
10 x 8	\$25	30 x 16	\$64
12 x 8	\$26	18 x 18	\$46
14 x 8	\$27	24 x 18	\$55
16 x 8	\$29	30 x 18	\$67
18 x 8	\$25	36 x 18	\$77
24 x 8	\$31	20 x 20	\$51
10 x 10	\$26	*22 x 10	\$35
12 x 10	\$24	22 x 22	\$41
14 x 10	\$29	**22 x 22	\$57
16 x 10	\$33	***46 x 22	\$119
18 x 10	\$34	24 x 24	\$62
20 x 10	\$34	30 x 24	\$78
24 x 10	\$36	36 x 24	\$89
30 x 10	\$50	48 x 24	\$130
36 x 10	\$55		

* For lay-in T-Bar ceiling, 24 x 12 panel.

** For lay-in T-Bar ceiling, 24 x 24 panel.

*** For lay-in T-Bar ceiling, 48 x 24 panel.

Square Cone Diffusers



MODEL SCD

- Round Neck
- Lay-In Style
- Steel, Aluminized or Aluminum Construction
- Removable Inner Core
- Available with Volume Damper
- White Finish

SCD STEEL CONSTRUCTION - 3 CONE

Neck Sizes	Panel Sizes	List Price
6, 8, 10, 12, 14	24 x 24	\$52
6, 8	12 x 12	\$38

SCD STEEL CONSTRUCTION - 4 CONE

Neck Sizes	Panel Sizes	List Price
6, 8, 10, 12, 14	24 x 24	\$58



MODEL SPD

- Round Neck
- Lay-In Style
- Steel or Aluminized Construction
- Removable Inner Core
- Available with Volume Damper
- White Finish

SPD STEEL CONSTRUCTION

Neck Sizes	Panel Sizes	List Price
6, 8, 10, 12, 14	24 x 24	\$57



MODEL SMD

- Surface Mount
- Steel Construction
- Removable Inner Core
- White Finish
- Opposed Blade Damper

MODEL SMD STEEL CONSTRUCTION

Neck Size	List Price
6 x 6	\$40
9 x 9	\$52
12 x 12	\$67



MODEL SMD-3P, AMD-3P

- Lay-In Style
- Steel or Aluminum Construction
- Removable Inner Core
- White Finish

MODEL SMD-3P STEEL CONSTRUCTION

Neck Size	Panel Size	List Price
6	24 x 24	\$66
8	24 x 24	\$75
10	24 x 24	\$90
12	24 x 24	\$95
14	24 x 24	\$112
16	24 x 24	\$112

MODEL AMD-3P ALUMINUM CONSTRUCTION

Neck Size	Panel Size	List Price
6 x 6	24 x 24	\$70
9 x 9	24 x 24	\$85
12 x 12	24 x 24	\$107
15 x 15	24 x 24	\$112

Round Ceiling Diffusers



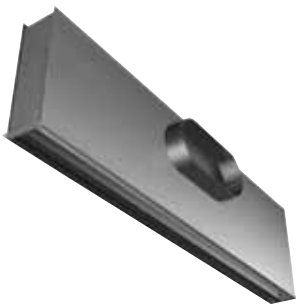
MODEL RCDE

- Round Ceiling Diffuser
- Low Profile Flush Mount
- Steel Construction

MODEL RCD - STEEL CONSTRUCTION

Size	List Price
6	\$73
8	\$78
10	\$78
12	\$92
14	\$131

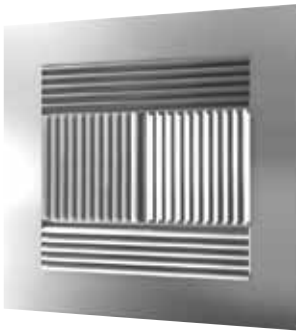
Lay-In Slot Diffusers



MODEL TBDI

- Lay-In Slot Diffuser

Size	Price Each
24" long w/ 6" inlet 1-slot	\$48
48" long w/ 8" inlet 1-slot	\$68
48" long w/ 10" inlet 2-slot	\$86

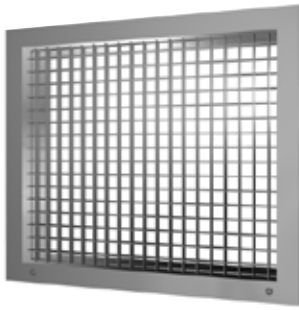


MODEL ACVD

- Curved Blade Diffuser
- Aluminum Construction
- Opposed Blade Damper
- White Finish
- Surface Mount

Direction	Size	Price Each
1-w	6 x 6	\$27
3-w	6 x 6	\$43
4-w	6 x 6	\$41
1-w	8 x 4	\$30
3-w	8 x 4	\$32
1-w	8 x 6	\$30
3-w	8 x 6	\$44
4-w	8 x 6	\$33
1-w	8 x 8	\$28
3-w	8 x 8	\$47
4-w	8 x 8	\$47
1-w	10 x 6	\$36
3-w	10 x 6	\$47
1-w	10 x 8	\$40
3-w	10 x 8	\$54
1-w	10 x 10	\$40
3-w	10 x 10	\$59
4-w	10 x 10	\$59
1-w	12 x 6	\$39
3-w	12 x 6	\$54
1-w	12 x 8	\$42
3-w	12 x 8	\$59
1-w	12 x 12	\$51
3-w	12 x 12	\$58
4-w	12 x 12	\$67
1-w	14 x 6	\$41
3-w	14 x 6	\$52
1-w	14 x 8	\$48
3-w	14 x 8	\$63
3-w	14 x 14	\$80
4-w	14 x 14	\$81
3-w	16 x 6	\$60
3-w	16 x 8	\$53
4-w	16 x 16	\$96
3-w	18 x 6	\$77
4-w	18 x 18	\$134
3-w	20 x 6	\$77

Filter Back Returns



MODEL 80FF

- Lay-In or Surface Mount
- Aluminum Construction
- 1/2" x 1/2" x 1/2" Cube Core
- Hinged Access
- Filter Not Included
- White Finish

LAY-IN

Neck Size	Panel Sizes	List Price
20 x 8	24 x 12	\$69
20 x 20	24 x 24	\$101
44 x 20	48 x 24	\$137

SURFACE MOUNT

Neck Size	Panel Sizes	List Price
48 x 24	-	\$147



MODEL 630FF

- Lay-In or Surface Mount
- Aluminum Construction
- Fixed Horizontal Bars
45 Degree Angle
- Hinged Access
- Filter Not Included
- White Finish

LAY-IN

Neck Size	Panel Size	List Price
20 x 8	24 x 12	\$70
20 x 20	24 x 24	\$95
44 x 20	48 x 24	\$158

SURFACE MOUNT

Neck Size	List Price	Neck Size	List Price
10 x 10	\$48	18 x 18	\$82
30 x 10	\$90	24 x 18	\$91
12 x 12	\$57	30 x 18	\$105
18 x 12	\$56	36 x 18	\$123
24 x 12	\$73	20 x 20	\$88
30 x 12	\$96	24 x 24	\$108
36 x 12	\$106	30 x 24	\$110
20 x 16	\$71	36 x 24	\$140
25 x 16	\$99	48 x 24	\$150

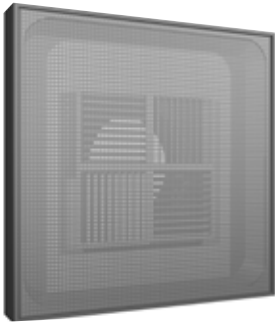


530FF - LAY IN

- Lay-In
- Steel Construction
- Fixed Horizontal Bars
45 Degree Angle
- Hinged Access
- Filter Not Included
- White Finish

LAY-IN

Neck Size	Panel Sizes	List Price
20 x 8	24 x 12	\$65
20 x 20	24 x 24	\$80
44 x 20	48 x 24	\$157



MODEL PDC & PDF

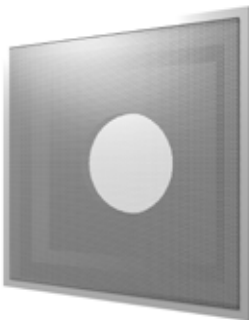
- Lay-in Style Supply Grille
- Curved Blade Deflector (PDC)
- Pattern Deflector (PDF)
- 4-Way Pattern
- White Finish
- Available with Butterfly Damper

MODEL PDC STEEL CONSTRUCTION

Neck Sizes	Panel Size	List Price
6, 8, 10, 12, 14	24 x 24	\$60

MODEL PDF STEEL CONSTRUCTION

Neck Sizes	Panel Size	List Price
6, 8, 10, 12, 14	24 x 24	\$40



MODEL PDDR

- Lay-in Style Return Grille
- White Finish
- Steel Construction

MODEL PDDR-3 STEEL CONSTRUCTION

Neck Size	Panel Size	List Price
22 x 22	24 x 24	\$30
22 x 10	24 x 12	\$41

Perforated Diffusers

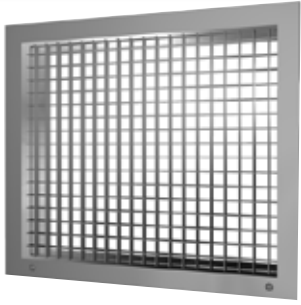


MODEL PFRF

- Lay-In perforated panel
- White Finish

Size	Price Each
24 x 12	\$17
24 x 24	\$22

Egg Crate / Door Grilles



MODEL 80

- Return Grille
- 1/2 x 1/2 x 1/2 Cube Core
- Aluminum Construction
- White Finish

Size	List Price	With OBD	Size	List Price
6 x 6	\$19	\$29	22 x 10 *	\$37
8 x 8	\$22	\$36	22 x 22 **	\$69
10 x 10	\$24	\$44	46 x 22 ***	\$167
12 x 12	\$29	\$52		

* For lay-in T-Bar ceiling, 24 x 12 panel.

** For lay-in T-Bar ceiling, 24 x 24 panel.

*** For lay-in T-Bar ceiling, 48 x 24 panel.



MODEL ATG

- Door Grille
- Double Flange
- Aluminum Construction
- White Finish

Neck Size	List Price	Neck Size	List Price
12 x 12	\$114	24 x 12	\$147
18 x 12	\$120	24 x 24	\$315

Spiral Duct Mounted Grilles



MODEL SDG

- Superior performance in exposed duct applications
- Vertical front blades
- Installation in round duct diameters 6 in. to 48 in.
- Integral gasket seals grille tightly to duct
- Built-in extractor to allow accurate balancing and uniform air flow
- Galvanized steel construction

Size	CFM	Spiral Size	List Price
12 x 4	0-250	6 to 24	\$95
18 x 4	251-400	8 to 24	\$129
12 x 6	251-400	12 to 24	\$93
18 x 6	300-500	12 to 24	\$112
24 x 6	401-700	12 to 24	\$159



MODEL VCS3

- Steel Construction
- For Square Neck Returns
- Opposed Blade Damper
- Screw Driver Adjustable
- Mill Finish

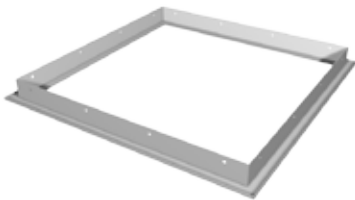
Size	List Price	Size	List Price
6 x 6	\$10	12 x 12	\$23
8 x 8	\$14	15 x 15	\$25
9 x 9	\$14	18 x 18	\$35
10 x 10	\$20	22 x 22	\$50



MODEL VCR-8E

- Steel Construction
- For Round Neck Grilles
- Butterfly Damper
- Screw Driver Adjustable
- Mill Finish

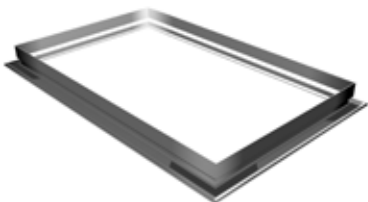
Sizes	List Price
6	\$15
8	\$15
10	\$16
12	\$18
14	\$22



MODEL SPF

- T-Bar Frame
- Steel Construction
- For Plaster Ceilings
- White Finish

Panel Size	List Price
12 x 12	\$22
24 x 12	\$31
24 x 24	\$32

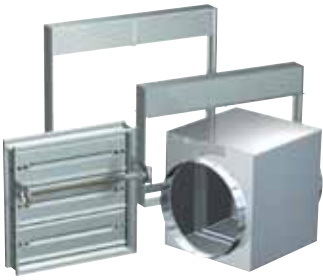


MODEL AMF

- T-Bar Frame
- Aluminum Construction
- For Plaster Ceilings
- White Finish

Panel Size	List Price
12 x 12	\$27
24 x 12	\$35
15 x 15	\$27
24 x 24	\$35

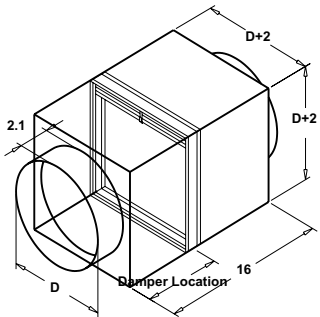
Fire Dampers



MODEL FD 150X12

- Static Rated Type A
- 1.5 Hour UL Label
- Use With Fire Partitions (2 Hours)
- Galvanized Steel Construction
- Horizontal & Vertical Installation
- Fusible Links UL listed (165°F)
- Mill Finish

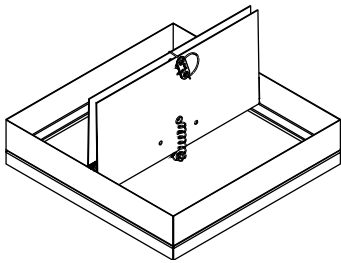
Size	List Price
12 x 12	\$76
24 x 12	\$98



MODEL FD-150X12

- Dynamic Rated Type R - Round Fire Damper 12" long sleeve
- 1.5 Hour UL Label
- 165 degree fusible link
- Galvanized Steel Construction
- Mill Finish

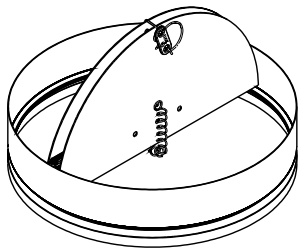
Size	List Price
6	\$60
8	\$78
10	\$80
12	\$103
14	\$147
16	\$147
18	\$174



MODEL CRD-1

- Butterfly Type Damper
- Galvanized Steel Construction (22 ga)
- Non-Asbestos Ceramic Blanket Blades
- Fire Resistance Rating – 3 Hours
- Fuse Link - 165°F
- Diameter Is 1/16 Undersized

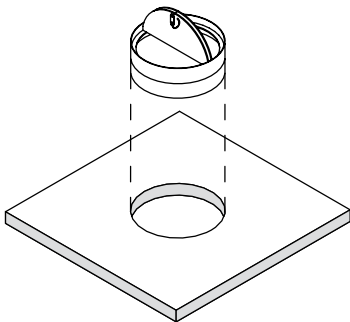
Size	List Price
6 x 6	\$28
8 x 8	\$32
9 x 9	\$41
10 x 10	\$41
22 x 10	\$63
12 x 12	\$59
14 x 14	\$63
15 x 15	\$55
18 x 18	\$66
22 x 22	\$101



MODEL CRD-2

- Butterfly Type Damper
- Galvanized Steel Construction (22 ga)
- Non-Asbestos Ceramic Blanket Blades
- Fire Resistance Rating – 3 Hours
- Fuse Link - 165°F

Size	List Price
6	\$35
8	\$37
10	\$41
12	\$47
14	\$48



THERMAL INSULATION BLANKET

- 1" Thick Mineral Wool
- Use with any ceiling radiation damper

Size	List Price
24 x 24	\$33

Access Doors



MODEL CAD / HAD

- Sheet Metal Duct Access Door
- Cam Latch & Hinge
- 1 (in.) Thick, Double Wall Door
- 22 Gauge Frame
- 24 Gauge Door
- Knock Over Frame Edges

Size	List Price
6 x 6	\$22
8 x 8	\$22
10 x 10	\$27
12 x 12	\$30
16 x 16	\$36
18 x 18	\$43
24 x 24	\$44



MODEL DBD

- Ductboard Access Door
- 1" Thick Double Wall Door
- 24 gauge Construction
- Cam Latch Hinge

Size	Price Each
8 x 8	\$39
10 x 10	\$36
12 x 12	\$43
14 x 10	\$46
18 x 18	\$76



MODEL MRAD

- Round Sheet Metal Duct Access Door
- Uninsulated Access Door
- Molded Knobs Threaded
- Galvanized Construction

Duct Size Diameter (in.)	Door Size	List Price
6 - 7	8 x 4	\$42
8 - 11	8 x 4	\$42
12 - 14	8 x 4	\$42
15 - 18	8 x 12	\$47



MODEL M

- Flush Access Panel
- Use On All Surfaces
- Easy Access To HVAC Systems
- 16 Gauge Frame
- 14 Gauge Door

Door Size	Rough Opening	List Price
6 x 6	6.25 x 6.25	\$68
8 x 8	8.25 x 8.25	\$31
10 x 10	10.25 x 10.25	\$41
12 x 12	12.25 x 12.25	\$41
14 x 14	14.25 x 14.25	\$51
16 x 16	16.25 x 16.25	\$52
18 x 18	18.25 x 18.25	\$60
24 x 24	24.25 x 24.25	\$93

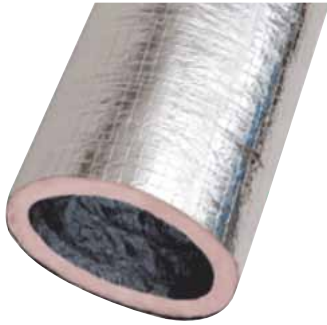


MODEL UFR

- Universal Fire Rated Access Panel
- Use On All Surfaces
- 16 Gauge Frame
- 14 Gauge Door

Door Size	Rough Opening	List Price
12 x 12	12.25 x 12.25	\$154
16 x 16	16.25 x 16.25	\$217
18 x 18	18.25 x 18.25	\$217
24 x 24	24.25 x 24.25	\$267

Flexible Duct Systems



THERMAFLEX KM

- R6 insulation, UL 181 listed
- For use in low pressure supply and return duct
- Metalized Polyester Jacket
- Maxium velocity of 5000 FPM
- 25' per bag

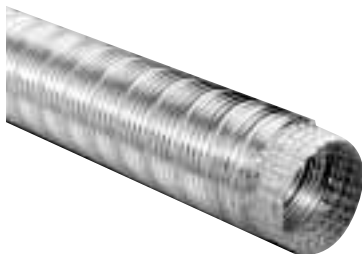
Size	Length	List Price
4	25'	\$41
5	25'	\$45
6	25'	\$60
7	25'	\$62
8	25'	\$64
9	25'	\$68
10	25'	\$76
12	25'	\$93
14	25'	\$105
16	25'	\$126
18	25'	\$142



THERMAFLEX MODEL M-KE

- R6 insulation, UL 181 listed
- For use in low and medium pressure supply and return duct
- Metalized Polyester Jacket
- Acoustically rated CPE core
- Maxium velocity of 5000 FPM
- 25' per bag

Size	Length	List Price
4	25'	\$65
5	25'	\$65
6	25'	\$88
7	25'	\$88
8	25'	\$106
9	25'	\$106
10	25'	\$128
12	25'	\$146
14	25'	\$169
16	25'	\$178
18	25'	\$280
20	25'	\$322



ATCO FLEX MODEL 20

- Single Wall Aluminum Flex Duct

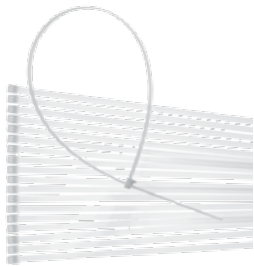
Size	Length	Price Each
3	8'	\$7
4	8'	\$10
6	8'	\$15
8	8'	\$20
10	8'	\$23
12	8'	\$42



STAINLESS STEEL CLAMP

- Worm drive, swivel action
- Suitable for high or low pressure, insulated or uninsulated

Model	Duct Size	List Price
63218	6 - 8 ½	\$9
63152	8 - 10	\$10
63188	10 - 12	\$11
63248	14 - 16	\$13



DYN-O-TIES

- Nylon tie snaps
- Quantity of 50 per bag
- Sold per bag

Model	Length	List Price
DN36	36	\$18
DN48	48	\$44

Roof Exhaust Direct Drive - G



ROOF EXHAUST DIRECT DRIVE - G

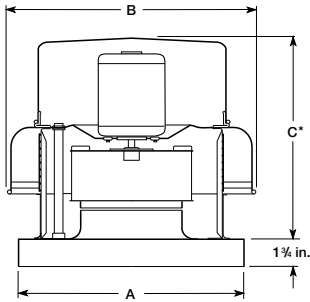
Model G Centrifugal Roof Exhaust fans are direct drive. These fans are specifically designed for roof mounted applications exhausting relatively clean air. Fan wheels are centrifugal, backward inclined, and constructed of aluminum.

PERFORMANCE

Performance capabilities range from 73 cfm to 4,295 cfm and up to 1 in. wg of static pressure.

STANDARD CONSTRUCTION FEATURES

- Aluminum housing
- Non-overloading backward inclined wheel
- Aluminum curb cap with prepunched mounting holes
- Integral reinforced bead for strength on hood
- Galvanized birdscreen
- Ball bearing motors (sizes 101-180), sleeve bearing motors (sizes 060-095)
- Motor isolated on shock mounts
- Corrosion resistant fasteners
- Nema-1 disconnect



G CONDENSED PERFORMANCE & DIMENSIONAL DATA

MODEL	A	B	C*	ROOF OPENING	DAMPER SIZE	IN STOCK SIZES (■)	MIN/MAX RPM	SONES @ 0 in.	PERFORMANCE IN INCHES WG								
									0	.125	.25	.5	.75	1			
G-060	17	19 ³ / ₈	12 ¹ / ₈	10 ¹ / ₂ x 10 ¹ / ₂	8 x 8	■	1050	1.7	138	73							
G-065	17	19 ³ / ₈	12 ¹ / ₈	10 ¹ / ₂ x 10 ¹ / ₂		■	1550	4.2	203	166	120						
G-070	17	19 ³ / ₈	12 ¹ / ₈	10 ¹ / ₂ x 10 ¹ / ₂		■	1050	2.2	187	110							
G-075	17	19 ³ / ₈	12 ¹ / ₈	10 ¹ / ₂ x 10 ¹ / ₂		■	1550	4.9	276	232	176						
G-080	17	21 ³ / ₄	14 ⁵ / ₈	12 ¹ / ₂ x 12 ¹ / ₂		■	1050	2.7	254	179							
G-085	17	21 ³ / ₄	14 ⁵ / ₈	12 ¹ / ₂ x 12 ¹ / ₂		■	1550	5.6	374	327	274						
G-090	17	21 ³ / ₄	14 ⁵ / ₈	12 ¹ / ₂ x 12 ¹ / ₂	10 x 10	■	1050	3.6	296	200							
G-095	17	21 ³ / ₄	14 ⁵ / ₈	12 ¹ / ₂ x 12 ¹ / ₂		■	1550	6.1	438	377	310						
G-101	19	24 ⁵ / ₈	20	14 ¹ / ₂ x 14 ¹ / ₂		12 x 12	■	1050	3.8	335	249	134					
G-121	19	24 ⁵ / ₈	20	14 ¹ / ₂ x 14 ¹ / ₂			■	1550	7.3	495	439	379	238				
G-131	22	28 ⁷ / ₈	20	18 ¹ / ₂ x 18 ¹ / ₂			16 x 16	■	1050	4.0	399	307	179				
G-141	22	28 ⁷ / ₈	20	18 ¹ / ₂ x 18 ¹ / ₂				■	1550	7.6	588	529	464	308			
G-150	26	35 ¹ / ₂	21 ¹ / ₈	18 ¹ / ₂ x 18 ¹ / ₂	18 x 18			■	1050	4.0	520	420	292				
G-160	30	35 ¹ / ₂	21 ⁵ / ₈	20 ¹ / ₂ x 20 ¹ / ₂				■	1550	7.6	768	700	633	472			
G-170	30	35 ¹ / ₂	21 ⁵ / ₈	20 ¹ / ₂ x 20 ¹ / ₂		18 x 18		■	1050	5.4	717	569	389				
G-180	30	35 ¹ / ₂	22 ³ / ₄	20 ¹ / ₂ x 20 ¹ / ₂				■	1550	9.6	1059	969	863	623			
									860	4.3	766	588	239				
									1725	12.1	1536	1454	1374	1181	974		
								860	5.6	922	723	449					
								1725	14.1	1849	1753	1659	1453	1223			
							860	6.5	1193	1011	771						
							1725	19.2	2393	2310	2222	2030	1820	1555			
							860	6.8	1376	1160	919						
							1140	10.4	1824	1667	1498	1112					
							860	7.9	1772	1552	1305						
							1140	11.7	2348	2184	2016	1629	1115				
							860	8.0	2008	1783	1535	552					
							1140	13.6	2662	2489	2319	1932	1411				
							860	9.7	2572	2329	2077	1417					
							1140	16.3	3409	3226	3042	2647	2182	1458			
							860	12.1	3240	3002	2733	1978					
							1140	19.5	4295	4122	3933	3509	2971	2247			

*May be greater depending on motor. All dimensions in inches.

Dimension A - given is the inside dimensions of the curb cap.

The roof curb should be 11/2 in. less than the curb cap to allow for roofing and flashing.

Performance certified is for installation type A: Free inlet, Free outlet. Power rating (BHP) does not include transmission losses. Performance ratings include the effects of a birdscreen.

The sound ratings shown are loudness values in fan sones at 5 ft. (1.5 m) in a hemispherical free field calculated per AMCA Standard 301. Values shown are for installation type A: Free inlet fan sone levels. The AMCA Certified Ratings Seal applies to sone ratings only.

G PERFORMANCE DATA - IN STOCK

in stock sizes include birdscreen, disconnect switch, UL/cUL 705 Electrical.

MODEL		RPM	PRESSURE IN INCHES WG					List Price	WD-100 Damper		GPI-Curb	
			.125	.25	.375	.5	.625		.75	Size	Add	Size
G-060-DGEX-QD 1/60 HP 3 Speed	E	1050	73					\$445	8 x 8	\$47	17	\$104
	G	1300	125									
	D	1550	166	120								
G-065-DGEX-QD 1/30 HP 3 Speed	E	1050	110					\$445	8 x 8	\$47	17	\$104
	G	1300	178	91								
	D	1550	232	176	96							
G-070-DGEX-QD 1/30 HP 3 Speed	E	1050	179					\$445	8 x 8	\$47	17	\$104
	G	1300	257	171								
	D	1550	327	274	190							
G-075-DGEX-QD 1/25 HP 3 Speed	E	1050	200					\$445	8 x 8	\$47	17	\$104
	G	1300	294	195								
	D	1550	377	310	214							
G-080-DGEX-QD 1/20 HP 3 Speed	E	1050	249	134				\$445	10 x 10	\$60	17	\$104
	G	1300	348	272	175							
	D	1550	439	379	314	238						
G-085-DGEX-QD 1/20 HP 3 Speed	E	1050	307	179				\$497	10 x 10	\$60	17	\$104
	G	1300	421	340	233							
	D	1550	529	464	393	308	169					
G-090-DGEX-QD 1/15 HP 3 Speed	E	1050	420	292				\$497	10 x 10	\$60	17	\$104
	G	1300	564	478	373							
	D	1550	700	633	558	472	338					
G-095-DGEX-QD 1/8 HP 3 Speed	E	1050	569	389				\$497	10 x 10	\$60	17	\$104
	G	1300	780	640	493	184						
	D	1550	969	863	745	623	474					

Performance certified is for installation type A: Free inlet, Free outlet. Power rating (BHP) does not include transmission losses. Performance ratings include the effects of a birdscreen. The sound ratings shown are loudness values in fan sones at 5 ft. (1.5 m) in a hemispherical free field calculated per AMCA Standard 301. Values shown are for installation type A: Free inlet fan sone levels. The AMCA Certified Ratings Seal applies to some ratings only.



Greenheck Fan Corporation certifies that the G models shown herein are licensed to bear the AMCA Seal. The ratings shown are based on tests and procedures performed in accordance with AMCA Publication 211 and AMCA Publication 311 and comply with the requirements of the AMCA Certified Ratings Program.

Roof Exhaust Belt Drive - GB



ROOF EXHAUST BELT DRIVE - GB

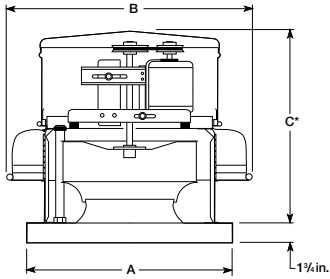
Model GB Centrifugal Roof Exhaust fans are belt drive. These fans are specifically designed for roof mounted applications exhausting relatively clean air. Fan wheels are centrifugal, backward inclined, and constructed of aluminum. Adjustable motor pulleys allow for final system balancing.

PERFORMANCE

Performance capabilities range from 140 cfm to 44,690 cfm and up to 2.0 in. wg of static pressure.

STANDARD CONSTRUCTION FEATURES

- Aluminum housing
- Non-overloading backward inclined wheel
- Galvanized birdscreen
- Integral reinforcing bead for strength
- Motor out of airstream
- Nema-1 disconnect
- Lifting lugs (mid and larger sizes)



Greenheck Fan Corporation certifies that the GB models shown herein are licensed to bear the AMCA Seal. The ratings shown are based on tests and procedures performed in accordance with AMCA Publication 211 and AMCA Publication 311 and comply with the requirements of the AMCA Certified Ratings Program.

GB CONDENSED PERFORMANCE RANGES & DIMENSIONAL DATA

MODEL	A	B	C*	ROOF OPENING	DAMPER SIZE	IN STOCK SIZES (■)	MIN/RPM	MAX RPM	SONES @ 0 in.	PERFORMANCE IN INCHES WG											
										0	.25	.5	.75	1	1.25	1.5	1.75	2.0			
GB-071	19	24 ³ / ₈	23 ³ / ₄	14 ¹ / ₂ x 14 ¹ / ₂	12 x 12	■	600	1.2	131	68											
								1710	11.1	372	334	292	245	198							
GB-081	19	24 ³ / ₈	23 ³ / ₄	14 ¹ / ₂ x 14 ¹ / ₂			■	600	2.2	301	175										
								1710	12.5	856	784	710	629	480							
GB-091	19	24 ³ / ₈	23 ³ / ₄	14 ¹ / ₂ x 14 ¹ / ₂			■	600	2.7	455	271										
								1710	13.4	1295	1179	1061	934	785							
GB-101	19	24 ³ / ₈	23 ³ / ₄	14 ¹ / ₂ x 14 ¹ / ₂			■	700	3.7	593	455										
								1800	13.2	1525	1418	1320	1208	1064	793						
GB-121	19	24 ³ / ₈	23 ³ / ₄	14 ¹ / ₂ x 14 ¹ / ₂			■	595	3.3	721											
								1725	17.4	2093	1984	1871	1743	1600	1426						
GB-131	19	28 ³ / ₈	23 ³ / ₄	14 ¹ / ₂ x 14 ¹ / ₂		16 x 16	■	595	4.5	844	655										
									1685	16.9	2391	2278	2157	2020	1857	1654					
GB-141	22	28 ³ / ₈	23 ³ / ₄	18 ¹ / ₂ x 18 ¹ / ₂			■	525	4.4	974	709										
								1705	20	3163	3020	2883	2739	2574	2370						
GB-161	22	28 ³ / ₈	23 ³ / ₄	18 ¹ / ₂ x 18 ¹ / ₂			■	478	4.7	1412	1030										
								1375	21	4062	3815	3571	3304	3007	2609	2073					
GB-180	30	35 ¹ / ₂	28	20 ¹ / ₂ x 20 ¹ / ₂	18 x 18			495	4.3	1924	1150										
									1460	26	5677	5514	5335	5155	4938	4698	4426	4123	3765		
GB-200	30	35 ¹ / ₂	28	20 ¹ / ₂ x 20 ¹ / ₂					440	6.5	2434										
									1200	24	6640	6336	5968	5650	5274	4828	4177	3077			
GB-220	34	42 ³ / ₄	31 ¹ / ₂	26 ¹ / ₂ x 26 ¹ / ₂			24 x 24		330	6.6	2507										
										985	23	7484	7212	6898	6568	6106	5547	4883			
GB-240	34	42 ³ / ₄	31 ¹ / ₂	26 ¹ / ₂ x 26 ¹ / ₂					425	5.9	3902	3422	2691								
									910	24	8355	7916	7467	6932	6240	5388	3707				
GB-260	40	50	36	32 ¹ / ₂ x 32 ¹ / ₂		30 x 30			270	7.7	3487										
										835	23	10784	10292	9794	9225	8606	7932	7157	6024	4294	
GB-300	40	50	36	32 ¹ / ₂ x 32 ¹ / ₂						300	9.3	4859	3976								
										890	28	14416	13897	13335	12716	12072	11379	10536	9568	7963	
GB-330	46	58 ³ / ₄	38 ¹ / ₂	38 ¹ / ₂ x 38 ¹ / ₂	36 x 36				255	5.2	6159										
										700	28	16908	16185	15408	14564	13624	12640	11538	10184		
GB-360	46	58 ³ / ₄	38 ¹ / ₂	38 ¹ / ₂ x 38 ¹ / ₂						215	4.8	5750									
										685	30	18321	17560	16711	15773	14710	13534	12119			
GB-420	52	65 ¹ / ₄	44	44 ¹ / ₂ x 44 ¹ / ₂			42 x 42		180	2.5	7417										
									600	30	24724	23765	22709	21620	20103	18584	16590				
GB-480	58	73 ³ / ₄	47 ¹ / ₄	50 ¹ / ₂ x 50 ¹ / ₂			48 x 48		150	5.6	9015										
									485	31	29148	27622	26016	24290	22106	19516					
GB-500	64	83	50 ³ / ₄	56 ¹ / ₂ x 56 ¹ / ₂		54 x 54		160	5.9	12893											
									460	33	37068	34991	32805	30342	27917	25310					
									160	6.3	14160										
GB-540	64	83	50 ³ / ₄	56 ¹ / ₂ x 56 ¹ / ₂					505	40	44694	43221	41157	38813	36503	33869	31293	26758			

GB PERFORMANCE DATA

MODEL	HP	RPM	TS	SONES @ 0 IN.	MAX BHP	PERFORMANCE IN INCHES WG							List Price	WD-100 Damper		GPI-Curb	
						.125	.25	.375	.5	.625	.75	1		Size	Add	Size	Add
GB-071-4X-QD-R2 873-1256 RPM 1/4 HP, 115/60/1 ODP GB-071-4X-QD-R3 1221-1710 RPM 1/4 HP, 115/60/1 ODP	1/4	600	1757	1.2	0.006	68							\$871	12x12	\$64	19	\$118
		939	2750	3.4	0.021	169	127										
		1247	3652	6.5	0.05	246	217	185	154	109							
		1556	4558	9.3	0.098	319	296	274	248	223	197	120					
		1710	5009	11.1	0.13	353	335	312	292	269	246	198					
GB-081-4X-QD-R2 873-1256 RPM 1/4 HP, 115/60/1 ODP GB-081-4X-QD-R3 1221-1710 RPM 1/4 HP, 115/60/1 ODP	1/4	600	1757	2.2	0.008	175							\$871	12x12	\$64	19	\$118
		939	2750	4.7	0.031	404	330										
		1247	3652	7.6	0.073	575	525	470	403	284							
		1556	4558	10.8	0.14	740	700	660	615	571	517						
		1710	5009	12.5	0.19	821	785	748	710	669	630	511					
GB-091-4X-QD-R2 863-1256 RPM 1/4 HP, 115/60/1 ODP GB-091-4X-QD-R3 1221-1710 RPM 1/4 HP, 115/60/1 ODP	1/4	600	1757	2.7	0.011	271							\$904	12x12	\$64	19	\$118
		939	2750	5.7	0.042	606	490	263									
		1247	3652	9.2	0.098	866	785	698	604	454							
		1556	4558	11.8	0.19	1116	1052	988	919	848	772	504					
		1710	5009	13.4	0.25	1238	1180	1122	1062	999	934	785					
GB-101-4X-QD-R3 1056-1400 RPM 1/4 HP, 115/60/1 ODP GB-101-4X-QD-R4 1324-1688 RPM 1/4 HP, 115/60/1 ODP GB-101-LMDX-QD 588-1800 RPM	1/4	700	2039	3.7	0.020	455							\$904	12x12	\$64	19	\$118
		1165	3393	6.8	0.091	905	830	731	578								
		1400	4077	8.9	0.16	1117	1051	989	909	810	633						
		1635	4761	11.1	0.25	1325	1269	1214	1161	1094	1019	792					
	1/3	1800	5242	13.2	0.33	1471	1418	1367	1320	1270	1208	1064		12x12	\$64	19	\$118
GB-121-4X-QD 980-1395 RPM 1/4 HP, 115/60/1 ODP GB-121-LMDX-QD 595-1550 RPM	1/4	595	2035	3.3	0.021	542							\$869	12x12	\$64	19	\$118
		820	2804	5.2	0.054	877	728										
		1045	3574	7.3	0.111	1177	1078	962	805								
		1395	4770	12.5	0.25	1625	1557	1484	1404	1315	1214	907					
	1/3	1550	5300	14.6	0.33	1820	1759	1696	1629	1555	1475	1289		12x12	\$64	19	\$118
GB-131-4X-QD 942-1315 RPM 1/4 HP, 115/60/1 ODP GB-131-5X-QD 1299-1685 RPM 1/2 HP, 115/208-230/60/1 ODP GB-131-LMDX-QD 540-1685 RPM	1/4	595	2044	4.5	0.024	655							\$1024	12x12	\$64	19	\$118
		720	2474	5.4	0.043	879	650										
		960	3299	7.6	0.103	1262	1144	990									
		1315	4518	13.2	0.26	1794	1718	1637	1545	1435	1305						
	1/3	1440	4948	15.0	0.35	1978	1911	1838	1759	1674	1571	1299		12x12	\$64	19	\$118
1/2	1685	5790	16.9	0.56	2335	2279	2219	2158	2093	2020	1857	12x12	\$64	19	\$118		
GB-141-4X-QD 614-865 RPM 1/4 HP, 115/60/1 ODP GB-141-3X-QD 906-1170 RPM 1/3 HP, 115/60/1 ODP GB-141-5X-QD 1049-1360 RPM 1/2 HP 115/208-230/60/1 ODP GB-141-LMDX-QD 450-1545 RPM	1/4	525	2010	4.4	0.030	709							\$1024	16x16	\$69	22	\$144
		710	2718	5.7	0.074	1147	908										
		920	3522	7.7	0.16	1576	1439	1258	961								
		1075	4115	10.0	0.26	1881	1771	1646	1489	1265							
	1/3	1170	4479	11.4	0.34	2066	1966	1858	1733	1574	1355			16x16	\$69	22	\$144
	1/2	1360	5207	14.6	0.53	2433	2346	2258	2166	2062	1942	1602		16x16	\$69	22	\$144
	3/4	1545	5915	17.6	0.78	2787	2709	2634	2556	2475	2384	2176		16x16	\$69	22	\$144
	1	1705	6528	20	1.03	3091	3020	2952	2883	2811	2739	2574		16x16	\$69	22	\$144

Performance certified is for installation type A: Free inlet, Free outlet. Power rating (BHP) does not include transmission losses. Performance ratings include the effects of a birdscreen. The sound ratings shown are loudness values in fan sonets at 5 ft. (1.5 m) in a hemispherical free field calculated per AMCA Standard 301. Values shown are for installation type A: Free inlet fan sone levels. The AMCA Certified Ratings Seal applies to sone ratings only.

Roof Exhaust Belt Drive - GB

GB PERFORMANCE DATA

MODEL	HP	RPM	TS	SONES @ 0 IN.	MAX BHP	PERFORMANCE IN INCHES WG								List Price	GPI-Curb		WD-100 Damper	
						.125	.25	.375	.5	.625	.75	1	Size		Add	Size	Add	
GB-161-4X-QD 634-865 RPM 1/4 HP 115/60/1 ODP	1/4	478	2080	4.7	0.044	1030							\$1050	16x16	\$69	22	\$144	
		625	2720	6.4	0.097	1574	1221											
		865	3764	10.6	0.26	2359	2162	1932	1624									
GB-161-5X-QD 852-1100 RPM 1/2 HP 115/208-230/60/1 ODP	1/3	945	4113	12.6	0.34	2612	2433	2236	2009	1692				16x16	\$69	22	\$144	
	1/2	1100	4787	15.3	0.53	3094	2943	2786	2614	2428	2197			16x16	\$69	22	\$144	
GB-161-LMDX-QD 425-1375 RPM	3/4	1250	5440	17.9	0.79	3556	3421	3288	3149	2997	2838	2443		16x16	\$69	22	\$144	
	1	1375	5984	21	1.05	3938	3815	3694	3571	3444	3304	3007	16x16	\$69	22	\$144		

Performance certified is for installation type A: Free inlet, Free outlet. Power rating (BHP) does not include transmission losses. Performance ratings include the effects of a birdscreen. The sound ratings shown are loudness values in fan sones at 5 ft. (1.5 m) in a hemispherical free field calculated per AMCA Standard 301. Values shown are for installation type A: Free inlet fan sone levels. The AMCA Certified Ratings Seal applies to sone ratings only.



UPBLAST ROOF EXHAUST BELT DRIVE - CUBE

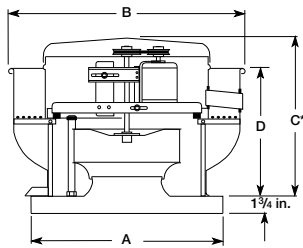
Model CUBE Centrifugal Roof Exhaust fans are belt drive. These fans are specifically designed for roof mounted applications. Exhaust air is discharged directly upward, away from the roof surface. Fan wheels are centrifugal, backward inclined, and constructed of aluminum. Adjustable motor pulleys allow for final system balancing.

PERFORMANCE

Performance capabilities range from 258 cfm to 30,000 cfm and up to 5 in. wg of static pressure.

STANDARD CONSTRUCTION FEATURES

- Aluminum housing
- Non-overloading backward inclined aluminum wheel
- Curb cap with prepunched mounting holes
- Motor and drives isolated on shock mounts
- Drain trough
- Ball bearing motors
- Adjustable motor pulley
- Adjustable motor plate
- Fan shaft mounted in ball bearings
- Static resistant belts
- Corrosion resistant fasteners
- Nema-1 disconnect



Greenheck Fan Corporation certifies that the CUBE models shown herein are licensed to bear the AMCA Seal. The ratings shown are based on tests and procedures performed in accordance with AMCA Publication 211 and AMCA Publication 311 and comply with the requirements of the AMCA Certified Ratings Program.

CUBE CONDENSED PERFORMANCE RANGES & DIMENSIONAL DATA

MODEL	A	B	C*	D	ROOF OPENING	DAMPER SIZE^	IN STOCK SIZES (■)	MIN/RPM	MAX RPM	SONES @ 0 IN.	PERFORMANCE IN INCHES WG						
											0	.25	.5	.75	1	2	
CUBE-098	19	24 ⁷ / ₈	28 ¹ / ₄	17 ³ / ₈	14 ¹ / ₂ x 14 ¹ / ₂	12 x 12	■	650	8.1	445	445						
									1725	13.8	1180	1017	824	586			
CUBE-101	19	24 ⁷ / ₈	28 ¹ / ₄	17 ³ / ₈	14 ¹ / ₂ x 14 ¹ / ₂			■	860	4.6	732	625	481				
									1820	14.3	1549	1459	1350	1234	1106		
CUBE-121	19	24 ⁷ / ₈	28 ¹ / ₄	17 ³ / ₈	14 ¹ / ₂ x 14 ¹ / ₂			■	685	4.4	809						
									1725	15.6	2037	1923	1816	1710	1571		
CUBE-131	19	24 ⁷ / ₈	28 ¹ / ₄	17 ³ / ₈	14 ¹ / ₂ x 14 ¹ / ₂	16 x 16		650	6.2	892							
									1645	17.9	2256	2128	2001	1864	1684		
CUBE-141	22	29 ³ / ₄	24 ³ / ₄	19 ³ / ₈	18 ¹ / ₂ x 18 ¹ / ₂				590	5.0	1069						
									1725	26	3125	3005	2865	2711	2539		
CUBE-161	22	29 ³ / ₄	24 ³ / ₄	19 ³ / ₈	18 ¹ / ₂ x 18 ¹ / ₂				730	8.1	2098	1669					
									1390	22	3996	3806	3584	3340	3078		
CUBE-180	30	35 ³ / ₈	28 ⁵ / ₈	21	20 ¹ / ₂ x 20 ¹ / ₂	18 x 18		630	7.1	2380	1861						
									1495	28	5648	5443	5254	5082	4921	3564	
CUBE-200	30	35 ³ / ₈	28 ⁵ / ₈	21	20 ¹ / ₂ x 20 ¹ / ₂				500	6.2	2812	1822					
									1210	25	6806	6451	6108	5748	5350		
CUBE-220	34	42 ²⁵ / ₃₂	33 ⁷ / ₈	25 ¹ / ₂	26 ¹ / ₂ x 26 ¹ / ₂		24 x 24		450	7.3	3585	2624					
										955	25	7607	7202	6799	6347	5844	
CUBE-240	34	42 ²⁵ / ₃₂	33 ⁷ / ₈	25 ¹ / ₂	26 ¹ / ₂ x 26 ¹ / ₂				410	6.4	3717	2471					
									930	24	8431	7985	7536	6953	6375		
									355	6.9	5777	4227					
									905	32	14727	14266	13788	13223	12614	9178	
CUBE-300	40	50	36	29	32 ¹ / ₂ x 32 ¹ / ₂	30 x 30		300	6.9	8092	6023						
								690	30	18611	17884	17115	16236	15243			
CUBE-360	46	56 ¹¹ / ₁₆	39 ¹ / ₈	29 ³ / ₈	38 ¹ / ₂ x 38 ¹ / ₂	36 x 36		220	6.5	9353	5075						
								600	29	25508	24604	23451	22295	21023			
CUBE-420	52	65 ³ / ₁₆	44 ³ / ₄	35 ¹ / ₄	44 ¹ / ₂ x 44 ¹ / ₂	42 x 42		180	5.5	11016							
								490	24	29988	28697	27291	25704	23674			
CUBE-480	58	74 ³ / ₁₆	48 ¹ / ₈	36	50 ¹ / ₂ x 50 ¹ / ₂	48 x 48											

Upblast Roof Exhaust Belt Drive - CUBE

CUBE PERFORMANCE DATA

MODEL	HP	RPM	TS	SONES @ 0 in.	MAX BHP	PERFORMANCE IN INCHES WG							List Price	GPI-19	
						.125	.25	.375	.5	.625	.75	1		Size	Add
CUBE-098-4G-QD 1259-1725 RPM 1/4 HP, 115/60/1 ODP	1/4	1160	3302	9.2	0.006	672	522						\$1,124	19	\$118
		1330	3786	10.7	0.09	804	689	361							
		1550	4412	13.0	0.14	966	878	644	502						
CUBE-101-4G-QD 1191-1660 RPM 1/4 HP, 115/60/1 ODP CUBE-101-3G-QD 1408-1820 RPM 1/3 HP, 115/208-230/60/1 ODP CUBE-101-LMDG-QD 960-1820 RPM	1/4	860	2505	4.6	0.04	625	481						\$1,236	19	\$118
		1205	3509	7.7	0.100	957	873	782	662						
		1660	4834	12.7	0.26	1364	1313	1251	1189	1125	1056	861			
	1/3	1820	5300	14.3	0.35	1505	1458	1406	1350	1293	1234	1106		19	\$118
CUBE-121-3G-QD 1068-1545 RPM 1/3 HP, 115/230/60/1 ODP CUBE-121-LMDG-QD 685-1545 RPM	1/4	685	2342	4.4	0.029	669							\$1,343	19	\$118
		845	2889	5.3	0.056	885	757								
		1045	3573	6.5	0.105	1141	1053	944	798						
		1410	4821	11.1	0.26	1594	1528	1463	1398	1315	1224	965			
	1/3	1545	5283	12.8	0.34	1760	1698	1639	1580	1518	1441	1262		19	\$118

Performance certified is for installation type A: Free inlet, Free outlet. Power rating (BHP) does not include transmission losses.

Performance ratings do not include the effects of appurtenances (accessories). The sound ratings shown are loudness values in fan sones at 5 ft. (1.5 m) in a hemispherical free field calculated per AMCA Standard 301. Values shown are for installation type A: Free inlet fan sone levels. The AMCA Certified Ratings Seal applies to sone ratings only.



**MODEL WD-100
GRAVITY BACKDRAFT
DAMPER**

- Galvanized Frame w/ Aluminum Blades
- Horizontal Mount
- 2500 FPM @ 1" wg max rating

Size	Price Each
8 x 8	\$47
10 x 10	\$60
12 x 12	\$64
16 x 16	\$69
18 x 18	\$91



GREASE TRAP KIT

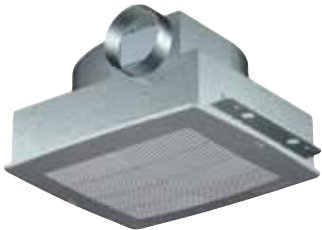
- Aluminum trap designed to collect grease residue to avoid drainage onto roof surface. (Roof Upblast only).

List Price	\$134
------------	-------

Ceiling Exhaust - SP



SP-A



SP-B



SP-C

CEILING EXHAUST - SP

Model SP Ceiling Exhaust fans are designed for clean air applications where low sound levels are desired. Low sound levels are achieved through quiet running forward curved wheels.

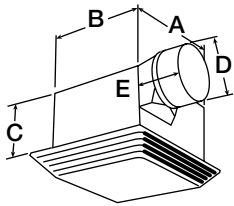
PERFORMANCE

Models SP-A, SP-B, and SP-C are compact exhaust fans with performance capabilities of 29 cfm to 1600 cfm and up to 1 in. wg.

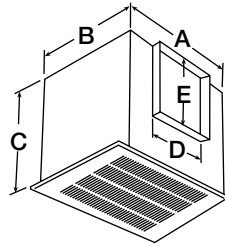
OPTIONS AND ACCESSORIES

- Grilles
- Lights
- Ceiling radiation dampers (CRD)
- Vibration isolation kits
- Roof discharge accessories
- Wall discharge accessories
- Speed controls
- Motion detectors
- Time delays
- Transitions
- Filters
- Contractor paks

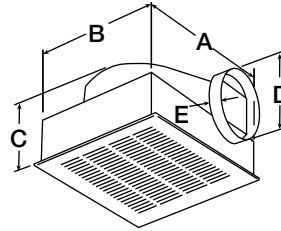
SP FANS			STANDARD FEATURES
A	B	C	
✓	✓	✓	Backdraft Damper - Prevents unwanted backdrafts.
✓			Spring Loaded Aluminum Backdraft Damper - Eliminates rattling or unwanted backdrafts (sizes 110 and up).
✓			Outlet - Both square and round outlets are field rotatable from horizontal to vertical discharge.
✓	✓	✓	Round Outlet (4 or 6 in.) - up to size A90. Versatile for quick, easy connections.
✓	✓		Power Assembly - Removes quickly for maintenance.
✓			External Electrical Access - Eliminates removing motor pack, saving installation time.
✓	✓		Electrical Knockout - Eliminates drilling holes.
✓	✓	✓	Disconnect (Plug Type) - Servicing is quick and safe.
✓	✓		Electrical Junction Box - Large for easy wiring.
✓	✓		Attractive Designer Grille - Concealed attachment screws securely to fasten grille to housing for quiet, rattle free operation.
✓	✓	✓	Mounting Brackets - Fully adjustable for multiple installation types.
✓	✓		Housing - Embossed galvanized steel for rigidity and low profile for height restricted areas.
✓	✓	✓	PSC Compatible Motors - 50 cycle, 220v, and 240v options. 60 cycle, 115v, 208v, 220v, 230v, and 277v options. (Check factory for availability)
✓	✓	✓	3 Year Warranty
✓	✓	✓	UL listed for above showers w/ GFCI branch protected circuit



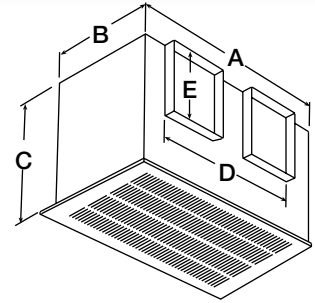
SP-C50



SP-A110 through SP-A510
and SP-A710 & SP-A780



SP-B50 through SP-B200



SP-A700, SP-A900
& SP-A1550

SP PERFORMANCE & DIMENSIONAL DATA - IN STOCK

MODEL	A	B	C	OUTLET		RPM	AMPS	WATTS	SONES @ 0 IN.	GRILLE SIZE	PERFORMANCE IN INCHES WG								List Price	
				D	E						.100	.125	.250	.375	.500	.625	.750	1.00		
SP-C50-QD	7 $\frac{1}{2}$	7 $\frac{1}{4}$	3 $\frac{5}{8}$	3 dia. x 1 $\frac{5}{8}$		1680	0.80	46	2.9	9 $\frac{1}{4}$ x 9	49	48	46	43	37	29				\$108
SP-B90-QD	13 $\frac{7}{8}$	11 $\frac{1}{2}$	7 $\frac{15}{16}$	6 dia. x 1 $\frac{1}{4}$		700	0.65	50	1.9	14 $\frac{1}{2}$ x 12 $\frac{3}{4}$	92	88	75	59	45	30				\$163
SP-B110-QD	13 $\frac{7}{8}$	11 $\frac{1}{2}$	7 $\frac{15}{16}$	6 dia. x 1 $\frac{1}{4}$		950	1.14	80	2.0	14 $\frac{1}{2}$ x 12 $\frac{3}{4}$	114	110	97	95	94	91	85	50		\$174
SP-B150-QD	13 $\frac{7}{8}$	11 $\frac{1}{2}$	7 $\frac{15}{16}$	6 dia. x 1 $\frac{1}{4}$		1050	1.70	129	3.0	14 $\frac{1}{2}$ x 12 $\frac{3}{4}$	156	155	154	152	149	147	138	92		\$189
SP-B200-QD	13 $\frac{7}{8}$	11 $\frac{1}{2}$	7 $\frac{15}{16}$	6 dia. x 1 $\frac{1}{4}$		1100	2.20	173	4.4	14 $\frac{1}{2}$ x 12 $\frac{3}{4}$	195	194	191	187	184	181	166	128		\$200
SP-A110-QD	13 $\frac{3}{4}$	10 $\frac{5}{8}$	10 $\frac{1}{2}$	8	6	950	0.58	49	1.3	14 $\frac{3}{4}$ x 12 $\frac{3}{4}$	110	106	88							\$258
SP-A125-QD	13 $\frac{3}{4}$	10 $\frac{5}{8}$	10 $\frac{1}{2}$	8	6	1100	0.62	53	1.4	14 $\frac{3}{4}$ x 12 $\frac{3}{4}$	123	121	104							\$271
SP-A190-QD	13 $\frac{3}{4}$	10 $\frac{5}{8}$	10 $\frac{1}{2}$	8	6	1400	1.30	113	3.2	14 $\frac{3}{4}$ x 12 $\frac{3}{4}$	197	192	167	133						\$313
SP-A250-QD	14	11 $\frac{7}{8}$	11 $\frac{1}{2}$	8	8	1000	0.77	83	2.9	14 $\frac{3}{4}$ x 12 $\frac{3}{4}$	251	246	227	210	185	157	119			\$324
SP-A290-QD	14	11 $\frac{7}{8}$	11 $\frac{1}{2}$	8	8	1050	0.72	81	3.2	14 $\frac{3}{4}$ x 12 $\frac{3}{4}$	293	287	257	231	207	175	124			\$337
SP-A390-QD	14	11 $\frac{7}{8}$	11 $\frac{1}{2}$	8	8	1350	1.34	135	5.4	14 $\frac{3}{4}$ x 12 $\frac{3}{4}$	395	391	368	345	325	307	279			\$383
SP-A410-QD	18	14 $\frac{3}{8}$	14 $\frac{1}{2}$	8	8	1000	1.74	121	4.1	19 $\frac{3}{8}$ x 16 $\frac{3}{8}$	413	405	351	305						\$408
SP-A510-QD	18	14 $\frac{3}{8}$	14 $\frac{1}{2}$	8	8	1070	3.30	224	6.1	19 $\frac{3}{8}$ x 16 $\frac{3}{8}$	512	501	439	392	325					\$408
SP-A710-QD	18	14 $\frac{3}{8}$	14 $\frac{1}{2}$	10	8	1080	4.40	285	7.4	19 $\frac{3}{8}$ x 16 $\frac{3}{8}$	714	701	653	588	485	320				\$590
SP-A780-QD	18	14 $\frac{3}{8}$	14 $\frac{1}{2}$	10	8	1600	3.30	348	10.2	19 $\frac{3}{8}$ x 16 $\frac{3}{8}$	782	775	741	704	665	625	581			\$590
SP-A900-QD	23 $\frac{3}{4}$	14 $\frac{3}{8}$	14 $\frac{1}{2}$	18 $\frac{3}{4}$	8	950	4.00	285	5.2	25 x 16 $\frac{3}{8}$	907	896	841	773	701					\$651
SP-A1050-QD	23 $\frac{3}{4}$	14 $\frac{3}{8}$	14 $\frac{1}{2}$	18 $\frac{3}{4}$	8	1095	6.30	420	7.2	25 x 16 $\frac{3}{8}$	1059	1043	964	885	796	662				\$651
SP-A1410-QD	23 $\frac{3}{4}$	14 $\frac{3}{8}$	14 $\frac{1}{2}$	18 $\frac{3}{4}$	8	1450	7.40	786	11.6	25 x 16 $\frac{3}{8}$	1414	1404	1353	1307	1262	1218	1174			\$651
SP-A1550-QD	23 $\frac{3}{4}$	14 $\frac{3}{8}$	14 $\frac{1}{2}$	18 $\frac{3}{4}$	8	1610	8.60	818	12.4	25 x 16 $\frac{3}{8}$	1568	1558	1506	1449	1407	1369	1323			\$720

All dimensions in inches. Performance certified is for installation type B: Free inlet, Ducted outlet. Performance ratings include the effects of an inlet grille and backdraft damper. Speed (RPM) shown is nominal. Performance is based on actual speed of test. The sound ratings shown are loudness values in fan sones at 5 ft. (1.5 m) in a hemispherical free field calculated per AMCA Standard 301. Values are for installation type B: free inlet some levels. The AMCA Certified Ratings Sound Seal applies to some ratings only.



UL/cUL 507
E33599
Ceiling Exhaust Fans are also UL Listed for sizes 50 through 390 for above bathtub/shower with GFCI branch protected circuit. File No. E33599



Greenheck Fan Corporation certifies that the SP models shown herein are licensed to bear the AMCA Seal. The ratings shown are based on tests and procedures performed in accordance with AMCA Publication 211 and AMCA Publication 311 and comply with the requirements of the AMCA Certified Ratings Program.



INLINE CABINET EXHAUST - CSP

Model CSP Inline Cabinet fans are designed for clean air applications where low sound levels are desired. Low sound levels are achieved through quiet running forward curved wheels.

PERFORMANCE

Models CSP-B110 through A3600 are duct mounted with performance capabilities of 77 cfm to 3,778 cfm and up to 1 in. wg of static pressure.

OPTIONS AND ACCESSORIES

- Vibration isolation kits
- Speed controls
- Motion detectors
- Time delays
- Roof discharge accessories
- Wall discharge accessories
- Transitions

CSP FANS		STANDARD FEATURES
A	B	
✓	✓	Aluminum Backdraft Damper- Prevents unwanted backdrafts.
✓		Spring Loaded Aluminum Backdraft Damper - Eliminates rattling or unwanted backdrafts.
✓	✓	Power Assembly - Removes quickly and is rotatable from horizontal to vertical discharge.
✓	✓	External Electrical Access - Eliminates removing motor pack, saving installation time.
✓	✓	Access Panel - Gain easy access to internal components once installed.
✓	✓	Mounting Brackets - Fully adjustable for multiple installation types.
✓	✓	Compatible with Speed Controllers
✓	✓	3 Year Warranty
✓	✓	UL listed for above showers w/ GFCI branch protected circuit.

CSP PERFORMANCE AND DIMENSIONAL DATA

MODEL	A	B	C	D	E	F	G	RPM	AMPS	WATTS	WT	PERFORMANCE IN INCHES WG						List Price	
												.125	.25	.375	.5	.75	1		
CSP-A110	13 ¹ / ₄	10 ⁵ / ₈	10 ¹ / ₂	8	6	12	9 ¹ / ₄	950	0.62	51	16	CFM	110	102	77				\$274
												Sones	1.1	1.3	1.3				
CSP-A125	13 ¹ / ₄	10 ⁵ / ₈	10 ¹ / ₂	8	6	12	9 ¹ / ₄	1100	0.63	55	16	CFM	124	113	91				\$274
												Sones	1.3	1.4	1.7				
CSP-A190	13 ¹ / ₄	10 ⁵ / ₈	10 ¹ / ₂	8	6	12	9 ¹ / ₄	1400	1.10	100	16	CFM	198	180	159	121			\$326
												Sones	2.2	2.7	2.9	3.0			
CSP-A250	14	10 ⁷ / ₈	11 ¹ / ₄	8	8	12 ⁷ / ₈	10	1000	0.79	83	23	CFM	241	221	205	187	132		\$326
												Sones	1.5	2.3	3.3	3.4	3.0		
CSP-A290	14	10 ⁷ / ₈	11 ¹ / ₄	8	8	12 ⁷ / ₈	10	1050	0.71	80	23	CFM	292	265	248	229	144		\$326
												Sones	1.8	2.6	3.3	4.0	3.4		
CSP-A390	14	10 ⁷ / ₈	11 ¹ / ₄	8	8	12 ⁷ / ₈	10	1350	1.33	144	23	CFM	397	382	363	339	309		\$383
												Sones	2.8	3.2	3.7	4.7	6.5		
CSP-A410	18	14 ³ / ₈	14 ¹ / ₂	8	8	16 ⁷ / ₈	13 ¹ / ₄	1000	1.87	139	36	CFM	403	364	316	217			\$383
												Sones	2.2	2.5	2.7	2.7			
CSP-A510	18	14 ³ / ₈	14 ¹ / ₂	8	8	16 ⁷ / ₈	13 ¹ / ₄	1070	3.11	217	36	CFM	506	464	405	324			\$408
												Sones	2.8	2.8	2.7	3.1			
CSP-A780	18	14 ³ / ₈	14 ¹ / ₂	10	8	16 ⁷ / ₈	13 ¹ / ₄	1600	3.77	405	36	CFM	776	741	707	671	603	527	\$619
												Sones	3.6	3.5	3.4	3.5	3.8	4.3	
CSP-A1050	23 ³ / ₄	14 ³ / ₈	14 ¹ / ₂	18 ³ / ₄	8	22 ⁵ / ₈	13 ¹ / ₄	1095	6.65	455	39	CFM	1093	1013	922	832			\$781
												Sones	3.1	3.1	3.4	3.4			

All dimensions in inches.

Performance certified is for Model CSP inline for installation type D: Ducted inlet, Ducted outlet. Performance ratings include the effects of a backdraft damper. Speed (RPM) shown is nominal. Performance is based on actual speed of test. The sound ratings shown are loudness values in fan sones at 5 ft. (1.5m) from the test inlet duct in a hemispherical free field calculated per AMCA Standard 301. Values are for installation type D: Ducted inlet fan some levels. Ratings do not include the effects of duct end correction. Ratings are based on 10 ft. of insulated duct. The AMCA Certified Ratings Seal applies to air performance only.



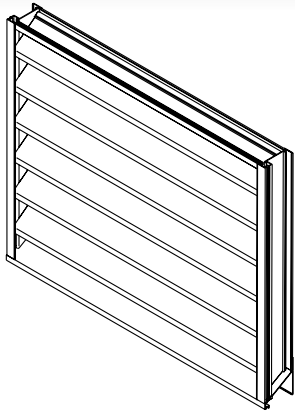
Greenheck Fan Corporation certifies that the CSP models shown herein are licensed to bear the AMCA Seal. The ratings shown are based on tests and procedures performed in accordance with AMCA Publication 211 and comply with the requirements of the AMCA Certified Ratings Program.



UL/cUL 507
E33599
Cabinet Fans are also UL Listed for above bathtub/shower with GFCI branch protected circuit. File No. E33599



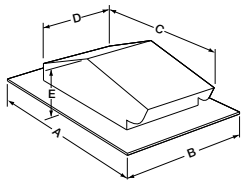
Discharge Accessories



MODEL ESJ-401 STATIONARY LOUVERS

- Extruded aluminum construction
- 1.5" Flange
- Mill Finish
- J Style Blade

Size	Price Each
12 x 12	\$120
18 x 18	\$193
24 x 24	\$261

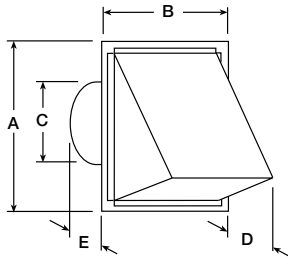


RJ-4 & RJ-6 X 9

MODEL RJ PITCHED ROOF CAP

- Steel construction with black enamel finish
- Integral flashing flange
- Built in birdscreen and damper

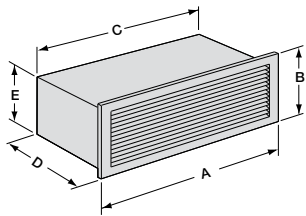
Model	For Use With Sizes	A	B	C	D	E	Throat	Price Each
RJ-6 x 9	B90-B200 A50-A390	18 ³ / ₄	14 ¹ / ₄	14 ¹ / ₂	10 ³ / ₈	6 ¹ / ₂	6 x 9	\$59



MODEL WC ROUND CONNECTION HOODED WALL CAP

- Aluminum construction - aluminum finish
- For outside wall applications
- Built-in birdscreen (except WC-4) and damper

Model	For Use With Sizes	A	B	C	D	E	List Price
WC-4	C50, B50-B80	6½	6	4	2¾	8.5	\$38
WC-6	B90-B200 A50-A190	8	8	6	4⅛	8.5	\$47
WC-8	A200-A510	11	11	8	5⅛	8.5	\$72



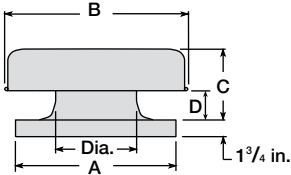
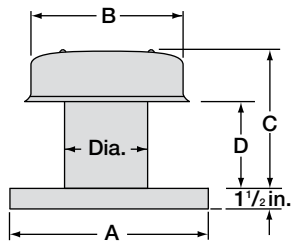
MODEL WL WALL LOUVERED DISCHARGE

- Anodized aluminum grille
- Built in damper

Model	For Use With Sizes	A	B	C	D	E	List Price
WL-10 x 3	50-290	12	5¼	10	7¾	3½	\$180

* Not recommended for exterior applications exposed to severe weather conditions. An external wall louver is recommended for such applications.

Gravity Ventilators



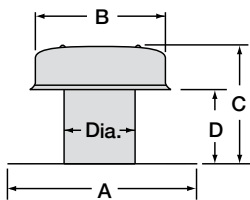
CURB CAP MODEL RCC-7

- Weathertight aluminum construction
- Integral birdscreen
- Built in curb cap
- Requires roof curb

MODEL GRS

- All aluminum exterior construction
- Galvanized steel internal supports
- Integral birdscreen
- Built in curb cap
- Requires roof curb

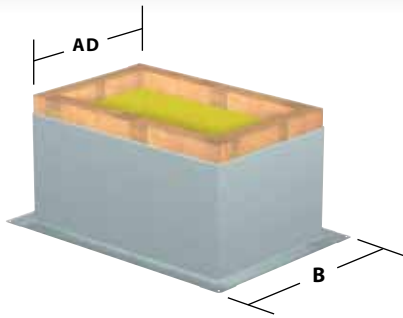
Model	For Use With Sizes	A	B	C	D	Dia.	Price Each
RCC-7	50-390	15	12	10	6 ³ / ₈	7	\$160
GRS-10	410-710	19	20 ¹ / ₂	6 ¹ / ₄	3	10 ¹ / ₄	\$163
GRS-12	780-1050	22	24 ³ / ₄	7 ⁷ / ₈	3 ¹ / ₄	12 ¹ / ₄	\$180
GRS-16	1410-2150	26	28 ⁵ / ₈	8 ³ / ₄	3 ³ / ₄	16 ⁵ / ₁₆	\$268
GRS-20	3600	30	35	9 ¹ / ₄	4 ¹ / ₄	20 ⁵ / ₁₆	\$332



FLASHING FLANGE MODEL RFC-7

- Weathertight aluminum construction
- Integral birdscreen
- Built in flashing flange

Model	For Use With Sizes	A	B	C	D	Dia.	Price Each
RFC-7	50-390	18	12	10	6 ³ / ₈	7	\$152



MODEL GPI ROOF CURB

- Galvanized Construction (18 GA.)
- Wooden Nailer
- 1" Insulation
- 12" High Flat (No Damper Tray)

MODEL GPN ROOF CURB

- Galvanized Construction (18 GA.)
- Wooden Nailer
- 1" Insulation
- 45 Degree Cant
- 12" High Flat (No Damper Tray)

Model	Dimensions			GPI Price Each	GPN Price Each
	AD	B	Roof Opening		
15	13 ½	17 ½	11 ½ x 11 ½	\$104	\$134
17	15 ½	19 ½	13 ½ x 13 ½	\$104	\$144
19	17 ½	21 ½	15 ½ x 15 ½	\$118	\$186
22	20 ½	24 ½	18 ½ x 18 ½	\$144	\$204
26	24 ½	28 ½	22 ½ x 22 ½	\$171	\$233
30	28 ½	32 ½	26 ½ x 26 ½	\$195	\$266
34	32 ½	36 ½	30 ½ x 30 ½	\$223	\$287
40	38 ½	42 ½	36 ½ x 36 ½	\$243	\$311

Spiral Ductwork


SPIRAL PIPE & FITTINGS

- A complete line of self sealing spiral duct and fittings
- Factory installed gasket - no loose parts
- Fast and easy installation
- Adjustability - fittings can be rotated 360 during installation and still maintain the seal's integrity
- Environmentally friendly, no harmful sealants required.
- Rolled over edges for easier installation, reduces risk of injury and adds strength
- Can be installed in all weather conditions
- Performance rated from -20°F to +212°F
- Triple lipped gasket minimizes the risk of leakage in the event of damage
- Manufactured to publish tolerance standard
- Gasket U.L. classified (ratings of Flame Spread = 0, Smoke Developed = 5) in accordance with ASTM standard E84-91a


	SP	E45 / E90		CPL-M / CPL-F		TO	PLUG	VD
DIAMETER	 10" SPIRAL PIPE	 45° ELBOW	 90° ELBOW	 PIPE COUPLING	 FITTING COUPLING	 TAKE-OFF	 END CAP	 MANUAL DAMPER
4	\$26	\$24	\$32	\$12	\$5	\$23	\$19	
6	\$33	\$32	\$33	\$15	\$6	\$30	\$20	\$42
8	\$41	\$36	\$77	\$17	\$7	\$30	\$22	\$46
10	\$54	\$46	\$66	\$18	\$9	\$32	\$26	\$58
12	\$63	\$57	\$79	\$18	\$9	\$45	\$26	\$68
14	\$81	\$74	\$114	\$18	\$12	\$45	\$30	\$89
16	\$107	\$88	\$147	\$22	\$12	\$47	\$35	
18	\$123	\$107	\$187	\$23	\$12	\$55	\$48	
20	\$142	\$117	\$226	\$30	\$13	\$62	\$59	
22	\$152	\$138	\$245	\$31	\$20	\$68	\$60	
24	\$167	\$154	\$300	\$39	\$20	\$71	\$68	

REDUCERS

Reducers feature fitting gaskets on both ends.

		RC
		
DIAMETER 1	DIAMETER 2	REDUCER
6	4	\$37
8	4	\$43
8	6	\$31
9	8	\$35
10	6	\$37
10	8	\$37
12	8	\$50
12	10	\$41
14	8	\$77
14	10	\$47
14	12	\$40
16	8	\$79
16	10	\$86
16	12	\$54
16	14	\$59
18	14	\$67
18	16	\$69
20	14	\$121
20	16	\$92
20	18	\$76
22	18	\$144
22	20	\$169
24	18	\$172
24	20	\$137
24	22	\$145

90° SADDLE TAP

		ST 2T
		
TAP DIAMETER	MAIN DIAMETER	SADDLE TAP
6	6 - 14	\$55
8	8 - 14	\$62
10	10 - 16	\$70
12	12 - 20	\$96
14	14 - 20	\$124

Filters



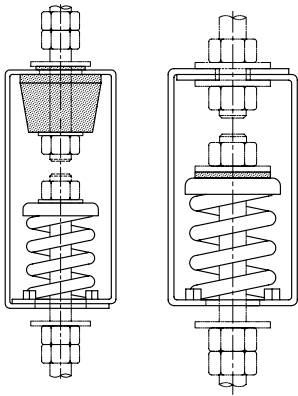
AAF PERFECT PLEATED FILTER

- Pleated Panel Filter
- 30% Efficiency
- Merv 8

1" Thick	Price Each
8 x 20	\$9
12 x 24	\$7
14 x 20	\$7
14 x 25	\$8
15 x 20	\$7
16 x 20	\$6
16 x 25	\$6
20 x 20	\$7
20 x 25	\$7
24 x 24	\$8

2" Thick	Price Each
12 x 24	\$7
14 x 20	\$8
14 x 25	\$8
15 x 20	\$8
16 x 20	\$8
16 x 25	\$8
18 x 24	\$8
18 x 25	\$8
20 x 20	\$7
20 x 24	\$8
20 x 25	\$9
24 x 24	\$10

4" Thick	Price Each
12 x 24	\$14
16 x 20	\$17
16 x 25	\$17
18 x 24	\$18
20 x 20	\$15
20 x 24	\$16
20 x 25	\$17
24 x 24	\$17

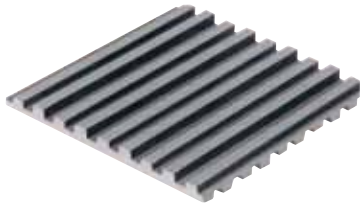


**HANGING ISOLATORS
AMBER BOOTH/VMC GROUP**

- Galvanized Steel Housing
- Color Coated Springs

Model	Type	Load Range	Price Each
HR-A-120	Rubber Only	10 - 120 lbs.	\$13
HRS-1C	Rubber & Spring	15 - 400 lbs.*	\$33
HS-IC	Small Spring Only	15 - 400 lbs.*	\$23
HS-ID	Large Spring Only	50 - 1600 lbs.*	\$34

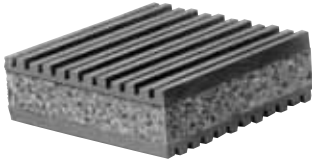
*Must specify actual load upon ordering.



**NEOPRENE PAD
ISOLATORS**

NR

- 3/8" thick ribbed neoprene pad
- 5 - 50 psi load range



NRC

- 1" thick ribbed neoprene pad w/ cork absorption center 5

- 60 psi load range

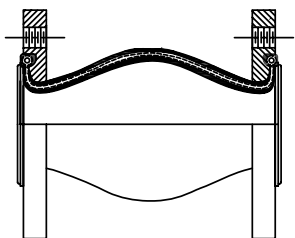


SPNRE

- 13/16" thick neoprene pad with center steel plate

- 5 - 50 psi

Model	Size	Price Each
NR	3 x 3	\$2
	4 x 4	\$3
	5 x 5	\$4
	6 x 6	\$7
	18 x 36	\$113
NRC	3 x 3	\$4
	4 x 4	\$6
	5 x 5	\$9
	6 x 6	\$14
	18 x 36	\$239
SPNRE	3 x 3	\$11
	4 x 4	\$17
	5 x 5	\$25
	6 x 6	\$28



**MODEL 2800
NEOPRENE FLEX
CONNECTORS**

- Maximum Operating Temperature 225 °F
- Maximum Pressure - 135 PSI
- Flanged w/ drilled holes

Size	Price Each
2	\$53
2.5	\$91
3	\$75
4	\$89
5	\$127
6	\$176
8	\$296



FLOOR MOUNTED ISOLATORS

- Maximum Operating Temperature 225 °F
- Maximum Pressure - 135 PSI
- Flanged w/ drilled holes

Model	A Top	D Top
XLS	\$38	\$40
XL	\$66	\$70
XLW	\$100	\$105

XLS - Small Aluminum Housed Spring Isolator 50 - 600 # Range
 XL - Medium Aluminum Housed Spring Isolator 50 - 1600 # Range
 XLW - Large Aluminum Housed Spring Isolator 300 - 3000 # Range
 A Top - External Adjustment - Nut & Bolt
 B Top - Flat top w/ Neoprene Pad



**ACUTHERM VAV
THERMAFUSERS
MODEL TF-HC**

- Thermally Operated VAV Diffuser
- 24 X 24 lay-in panel
- Heating & Cooling Application

NECK

Size	Price Each
6, 8, 10, 12	\$600

RELIEF RINGS

Size	Price Each
6, 8, 10	\$60

Air Terminals



MODEL SDV

- Single Duct VAV Box
- No Heat

Size	Price Each
6	\$199
8	\$237
10	\$264
12	\$270
14	\$303
16	\$311

Sheetmetal Ducts, Elbows & Fittings



SINGLE WALL SHEETMETAL DUCT

- Round Snaplock Pipe - Type 100
- Standard Guages - 3" - 12" - 30 ga; 14" - 18" - 28 ga.
- 5 foot sections - size 3" - 14";
3 foot sections - 14" - 18"

Size	Type 100
3	\$9
4	\$7
5	\$9
6	\$8
7	\$13
8	\$12
9	\$16
10	\$18
12	\$22
14	\$30
16	\$21
18	\$27



ROUND ELBOWS - TYPE 125

- 0 - 90° Adjustable
- Standard Guages - 3" - 8" - 30 ga; 9" - 14" - 78 ga; 16" - 18" - 26 ga.
- Galvanized Steel Construction

Size	Type 125
4	\$3
5	\$4
6	\$3
7	\$4
8	\$4
9	\$6
10	\$7
12	\$10
14	\$14
16	\$24



**REDUCERS -
TYPE 400**

- Galvanized Steel Construction

Size	Price Each
5 x 4	\$6
6 x 4	\$6
6 x 5	\$6
7 x 5	\$6
7 x 6	\$6
8 x 6	\$6
8 x 7	\$6
9 x 6	\$6
9 x 7	\$6
9 x 8	\$6
10 x 6	\$7
10 x 7	\$7
10 x 8	\$7
10 x 9	\$7
12 x 6	\$8
12 x 8	\$9
12 x 9	\$9
12 x 10	\$9
14 x 10	\$10
14 x 12	\$11
16 x 10	\$17
16 x 12	\$17
16 x 14	\$17



**WYES -
TYPE 800**

- 45° branch
- Galvanized Steel Construction

Size	Price Each
8 x 6 x 6	\$11
9 x 7 x 7	\$9
10 x 8 x 8	\$13
12 x 10 x 10	\$18

Sheetmetal Accessories



INSULATED REGISTER BOXES

- 1" Ductliner
- R-6 Insulation Valve
- 4" tall w/ Snap - Rail Flange

Size	Price Each
6 x 6 x 6	\$12
8 x 4 x 6	\$12
8 x 6 x 6	\$14
8 x 8 x 6	\$15
8 x 8 x 7	\$15
8 x 8 x 8	\$15
10 x 6 x 6	\$12
10 x 8 x 8	\$13
10 x 10 x 8	\$16
10 x 10 x 10	\$17
12 x 6 x 7	\$13
12 x 8 x 8	\$16
12 x 12 x 8	\$21
12 x 12 x 10	\$21
14 x 6 x 8	\$13
14 x 8 x 9	\$22
14 x 14 x 12	\$22
14 x 14 x 14	\$22
16 x 6 x 9	\$22



SIDE TAKEOFFS

- Galvanized Construction
- 26 ga.
- Square to Round Transition
- Takeoffs w/ damper will include 2" standoff
- 3/8" continuous rod, nylon bearings

Size	No Damper	w/ Damper
6	\$22	\$36
8	\$29	\$36
10	\$35	\$46
12	\$38	\$53
14	\$40	\$61
16	\$44	\$74



SPIN-INS

- Galvanized steel construction

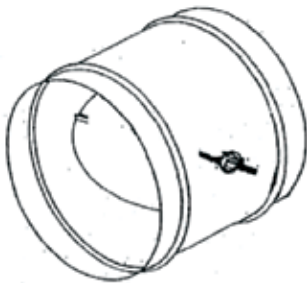
Use on galvanized steel:

- MSD - Fitting with damper
- MSD-CO3 Fitting with damper and 2" standoff bracket
- CD-C03-Conical fitting with damper & 2" standoff bracket

Use on fiberglass ductboard:

- DB Fitting with damper and 45 degree extractor

Size	MSD	MSD - C03	DB	CD-C03
4	\$9			
5	\$6		\$8	
6	\$8	\$16	\$7	\$21
7	\$8		\$8	
8	\$9	\$17	\$9	\$25
9	\$10		\$10	
10	\$11	\$20	\$12	\$29
12	\$13	\$23	\$14	\$35
14	\$17	\$28	\$16	\$52
16	\$21	\$32	\$20	\$74
18	\$30		\$24	



ROUND INLINE BALANCING DAMPER








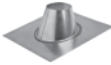

- Galvanized Construction
- 26 ga.
- 2" standoff w/ 3/8" continuous rod, nylon bearings

Size	Price Each
6	\$17
8	\$21
10	\$23
12	\$27

B-Vent Flue Pipe

TYPE B GAS VENT METAL FAB MODEL M

- Double Wall Construction
- Positive Twist Lock
- Swival Tees, Wyes, & Elbows
- Hemmed outer & inner Liners

	M3	M5	M12	M18	M24	M12A	MC	MDC	MSC	M45	M90	MF	MT
													
SIZE													
3	\$18	\$30	\$9	\$11	\$15	\$12	\$13	\$10	\$3	\$15	\$26	\$10	\$33
4	\$23	\$38	\$12	\$13	\$18	\$14	\$17	\$11	\$3	\$19	\$32	\$12	\$38
5	\$28	\$47	\$13	\$15	\$22	\$16	\$23	\$11	\$7	\$20	\$40	\$15	\$43
6	\$33	\$54	\$14	\$19	\$26	\$19	\$28	\$11	\$7	\$26	\$47	\$22	\$51
7	\$44	\$70	\$19	\$25	\$33	\$22	\$36	\$11	\$8	\$34	\$62	\$29	\$58
8	\$55	\$90	\$25	\$31	\$42	\$26	\$50	\$12	\$9	\$41	\$72	\$31	\$65
10	\$111	\$172	\$61	\$66	\$90	\$64	\$106	\$22	\$10	\$105		\$41	\$174
12	\$157		\$96	\$88	\$118	\$98	\$146	\$22	\$10	\$137		\$52	\$212
14	\$304		\$169	\$166	\$231	\$219	\$244	\$65	\$22	\$232		\$82	\$445
16	\$330		\$189	\$193	\$252	\$232	\$279	\$78	\$38	\$243		\$82	\$450



INCREASERS

Size	Price Each	Size	Price Each
3 x 4	\$23	6 x 10	\$67
3 x 7	\$23	7 x 8	\$32
4 x 5	\$23	8 x 10	\$71
4 x 6	\$25	8 x 12	\$83
5 x 6	\$25	10 x 12	\$98
5 x 7	\$25	12 x 14	\$149
6 x 7	\$25	14 x 16	\$149
6 x 8	\$32		



WEKSLER MODEL - EA PRESSURE GAUGES

- Corrosion Resistant Stainless Steel Construction
- Phosphor bronze movement
- Easy to read dial; white background with black numerals
- 1/4 NPT bottom connection

Number	Dial Range	Figure Intervals	Price Each
EA14A	0-30 psi	5 psi	\$34
EA14B	0-60 psi	10 psi	\$34
EA14C	0-100 psi	10 psi	\$34
EA14D	0-160 psi	20 psi	\$34
EA14E	0-200 psi	20 psi	\$34
EA14F	0-300 psi	50 psi	\$34
EA14G	0-500 psi	50 psi	\$34



WEKSLER MODEL A935 THERMOMETER

- Corrosion Resistant Stainless Steel Construction
- Easy to read dial; white background w/ black numerals
- 3 1/2 - 11/5" round dial

Number	Range	Dial	Price Each
A935AF2	0 - 120°F	3"	\$72
A935AF3	0 - 160°F	3"	\$72
A935AF5	30 - 240°F	3"	\$72
A960AF2	0 - 120°F	6"	\$85
A960AF3	0 - 160°F	6"	\$85
A960AF5	30 - 240°F	6"	\$85

Introduction to Fan Selection

DETERMINING CFM

After the model is known, the cfm must be determined. Consult local code requirements or the table below for suggested air changes for proper ventilation.

The ranges specified will adequately ventilate the corresponding areas in most cases. However, extreme conditions may require "Minutes per Change" outside of the specified range. To determine the actual number needed within a range, consider the

geographic location and average duty level of the area. For hot climates and heavier than normal area usage, select a lower number in the range to change the air more quickly. For moderate climates with lighter usages, select a higher number in the range.

To determine the cfm required to adequately ventilate an area, divide the room volume by the appropriate "Minutes per Change" value.

SUGGESTED AIR CHANGES FOR PROPER VENTILATION

$$\text{cfm} = \frac{\text{Room Volume}}{\text{Min./Chg.}}$$

Room Volume = L x W x H (of room)

Area	Min./Chg.	Area	Min./Chg.	Area	Min./Chg.
Assembly Hall	3-10	Dance Hall	3-7	Machine Shop.	3-6
Attic.	2-4	Dining Room	4-8	Mill	3-8
Auditorium	3-10	Dry Cleaner.	2-5	Office	2-8
Bakery	2-3	Engine Room	1-3	Packing House	2-5
Bar.	2-4	Factory	2-7	Projection Room.	1-2
Barn.	12-18	Foundry	1-5	Recreation Room	2-8
Boiler Room.	1-3	Garage	2-10	Residence	2-6
Bowling Alley	3-7	Generator Room.	2-5	Restaurant.	5-10
Cafeteria	3-5	Gymnasium	3-8	Rest Room.	5-7
Church.	4-10	Kitchen	1-5	Store	3-7
Classroom	4-6	Laboratory	2-5	Transfer Room.	1-5
Club Room	3-7	Laundry	2-4	Warehouse	3-10

SAMPLE PROBLEM

A building requires an exhaust fan to ventilate a general office (see diagram below) which measures 30 ft. x 40 ft. x 8 ft. The office is often crowded.

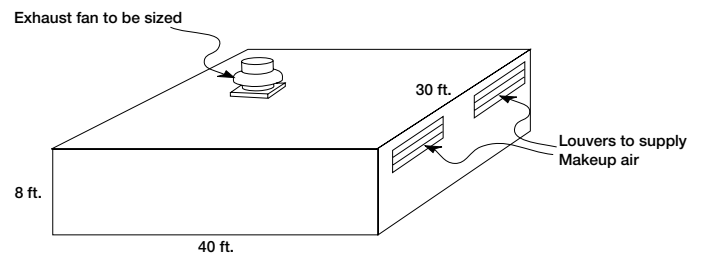
Solution:

The total room volume is 30 ft. x 40 ft. x 8 ft. = 9600 cubic feet. From the chart, the range for general offices is 2-8 minutes per change. Since the office has heavier than normal usage, 4 minutes per change is recommended. Therefore, the required exhaust is:

$$\frac{9600 \text{ ft}^3}{4 \text{ min.}} = 2400 \text{ cfm}$$

Since the air to be exhausted is relatively clean, this is an ideal application for a model GB fan.

Note: In this example, make-up air was provided through a set of louvers at the wall farthest from the exhaust fan. If there were no provisions for make-up air in this room, a supply fan would also have to be sized. The supply cfm should equal the exhaust cfm. Supply fan location should be as far as possible from the exhaust fan.



Additional product in stock are below. Call your nearest Mechanical Reps location for price & availability.



ACME
Specialty Roof Curbs



ARMSTRONG
Circuit Setters



BROAN
Fans, Wall Caps, Switches



DUCTMATE
Angle Flange, Corner, Gasket, Pins, Duct Sealer, Turning Vand And Rail



DURO DYNE
Sheetmetal Parts, Flexible Connectors, Pins, Damper Hardware, Duct Sealer



DWYER
Magnetic Guages, , Manometers



LOCHINVAR
Boiler Replacement Parts



PETERSON EQUIPMENT
Pete's Plugs, Probes, Adapters



SHURTAPE
Foil Tape, Duct Tape



WATTS
Pressure Relief Valves



WINKLER
Blastgates



LINK-SEAL
Pipe Modular Seals



Austin

3901 Woodbury Drive
P.O. Box 41869
Austin, Texas 78704
Tel: 512.444.1835
Fax: 512.444.5522

San Antonio

4710 Perrin Creek #300
San Antonio, Texas 78217
Tel: 210.650.9005
Fax: 210.590.1645

Rio Grande Valley

1409 N. Stuart Place Road
Suite E
Harlingen, Texas 78552
Tel: 956.412.1110
Fax: 956.412.1350

www.mechreps.com